

Bamboo House Prices & Plans



We are a Hyderabad-based
social enterprise building
sustainable houses and
supporting community-based
livelihoods.





We make Engineered Bamboo Houses



www.bamboohouseindia.org

Plan 1

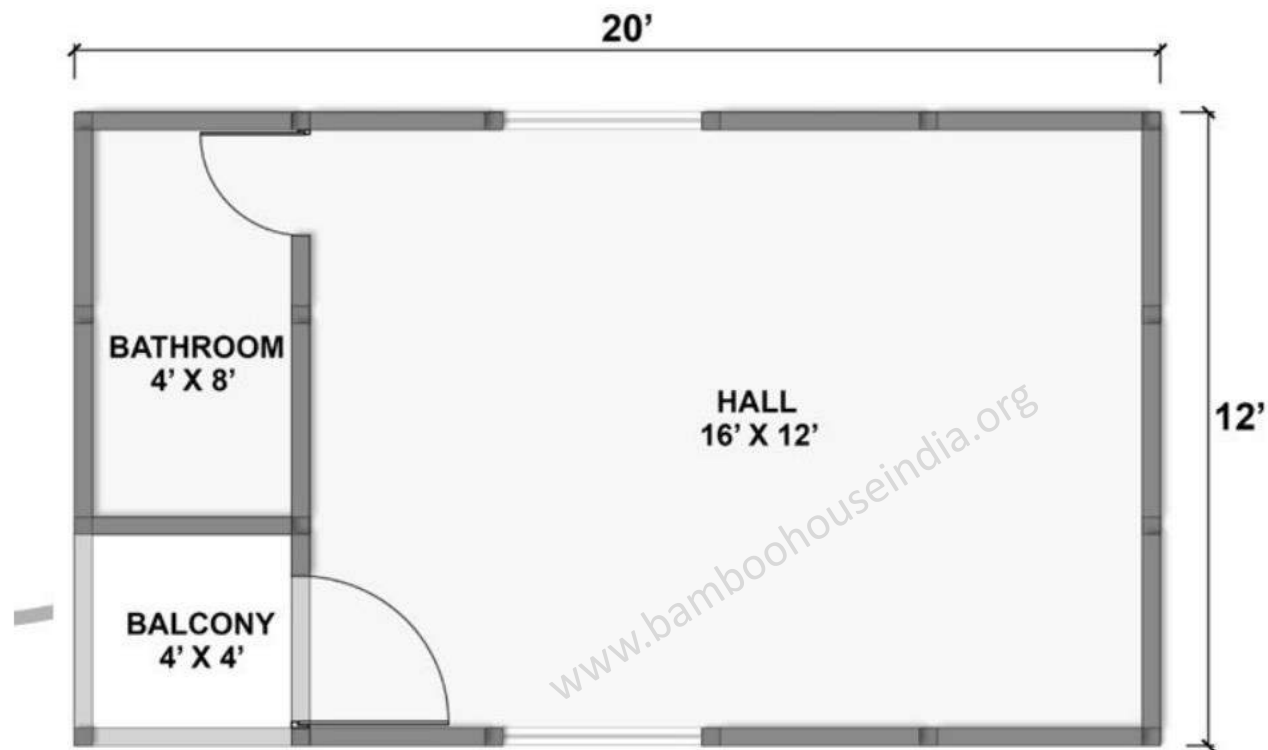


Cost mentioned is without
Civil, electrical, flooring &
Plumbing works

Rs.3,00,000/-



Plan 2



Rs.3,10,000/-

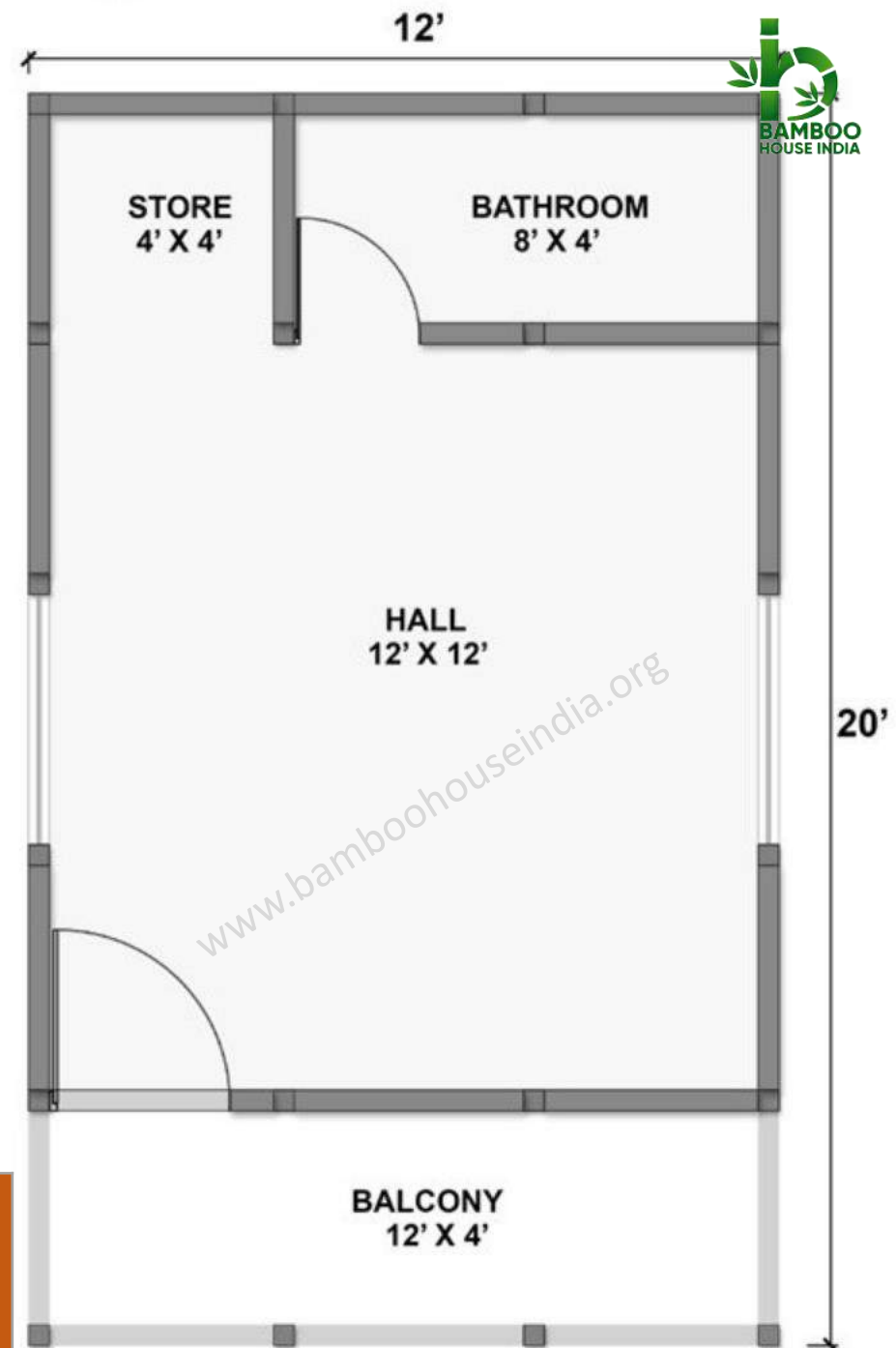
Cost mentioned is without
Civil, electrical, flooring &
Plumbing works

Plan 3



Rs.2,90,000/-

Cost mentioned is without
Civil, electrical, flooring &
Plumbing works



Plan 4

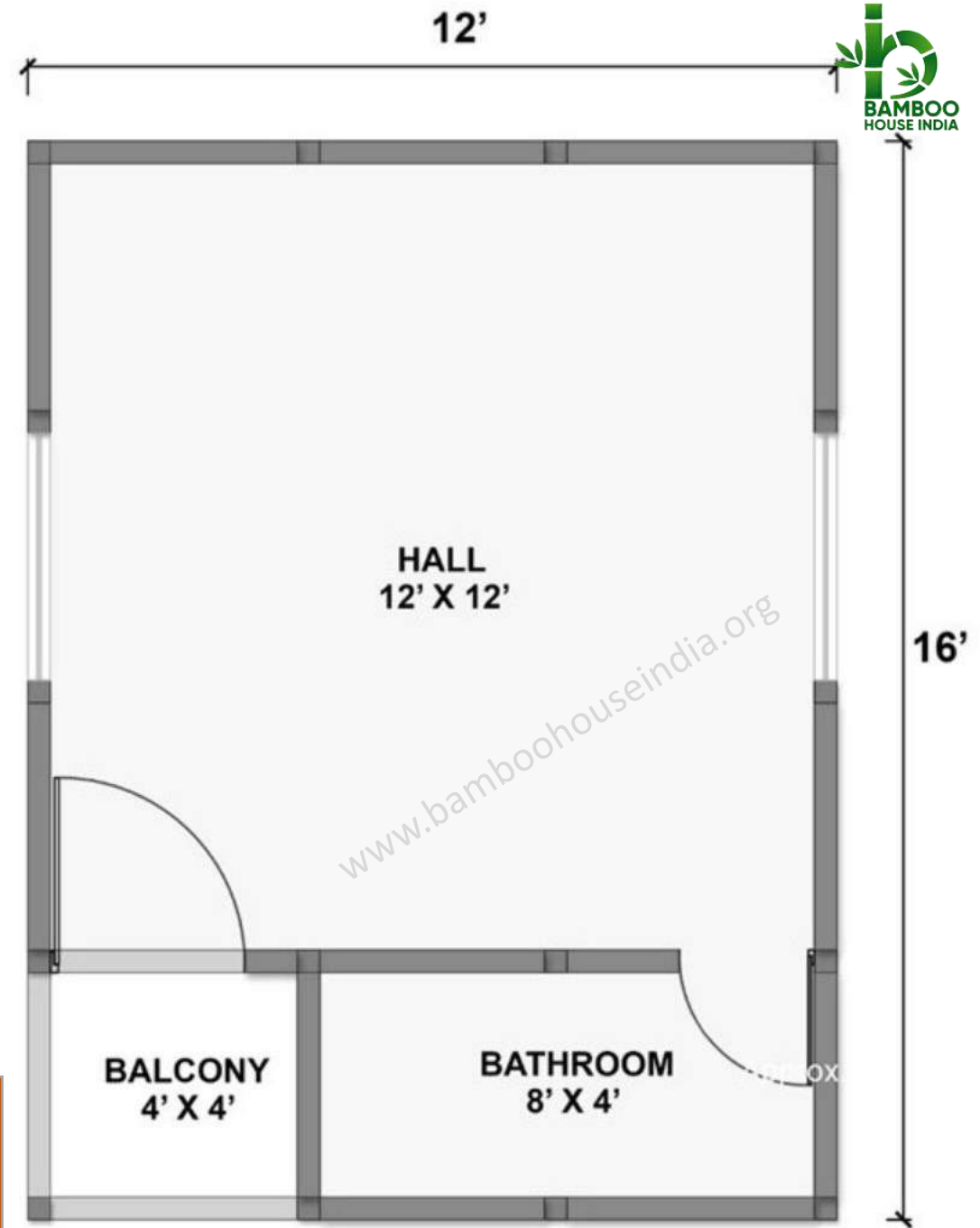


16'

12'

Rs.2,70,000/-

Cost mentioned is without Civil, electrical, flooring & Plumbing works.



12'

16'

HALL
12' X 12'

BALCONY
4' X 4'

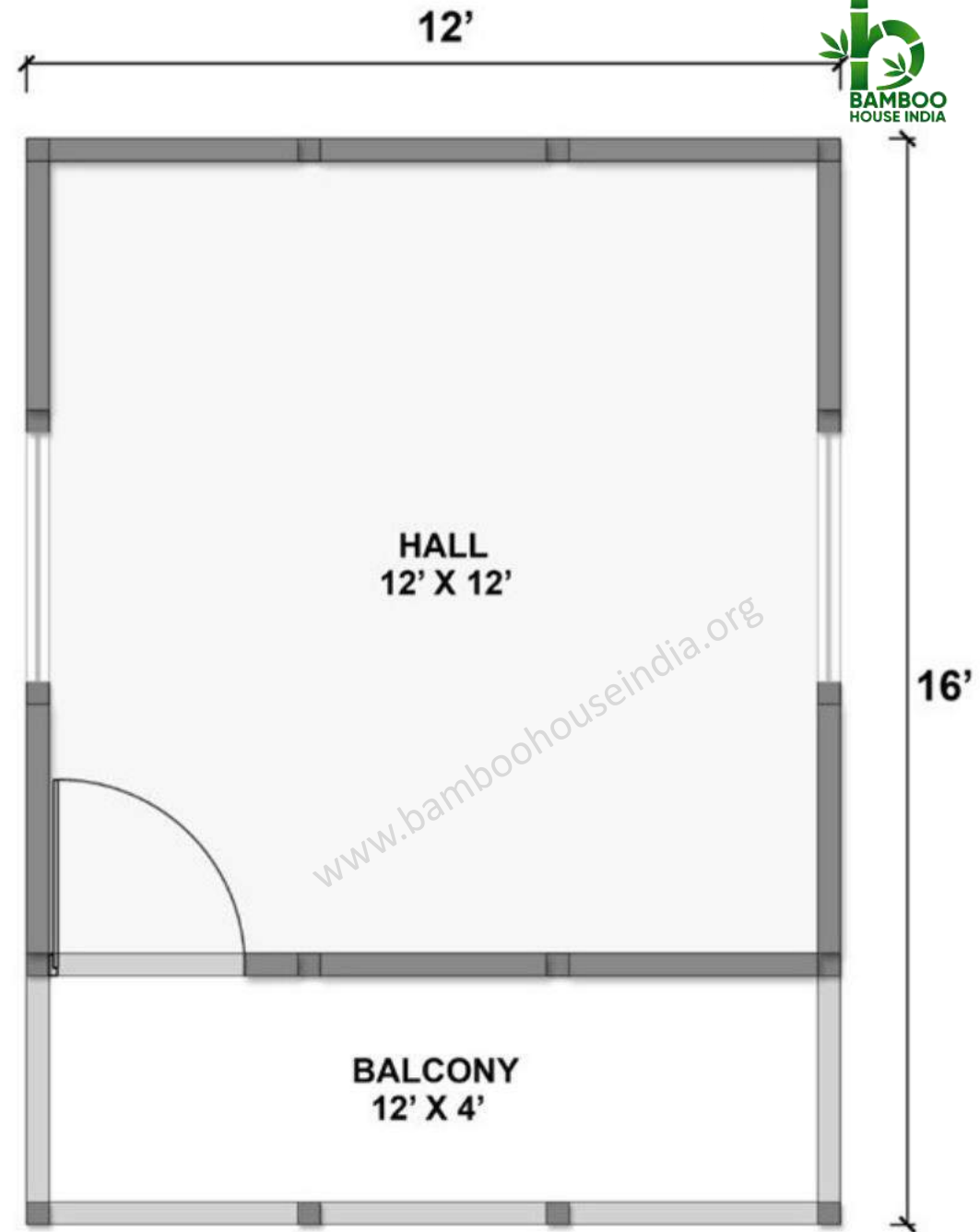
BATHROOM
8' X 4'

Plan 5

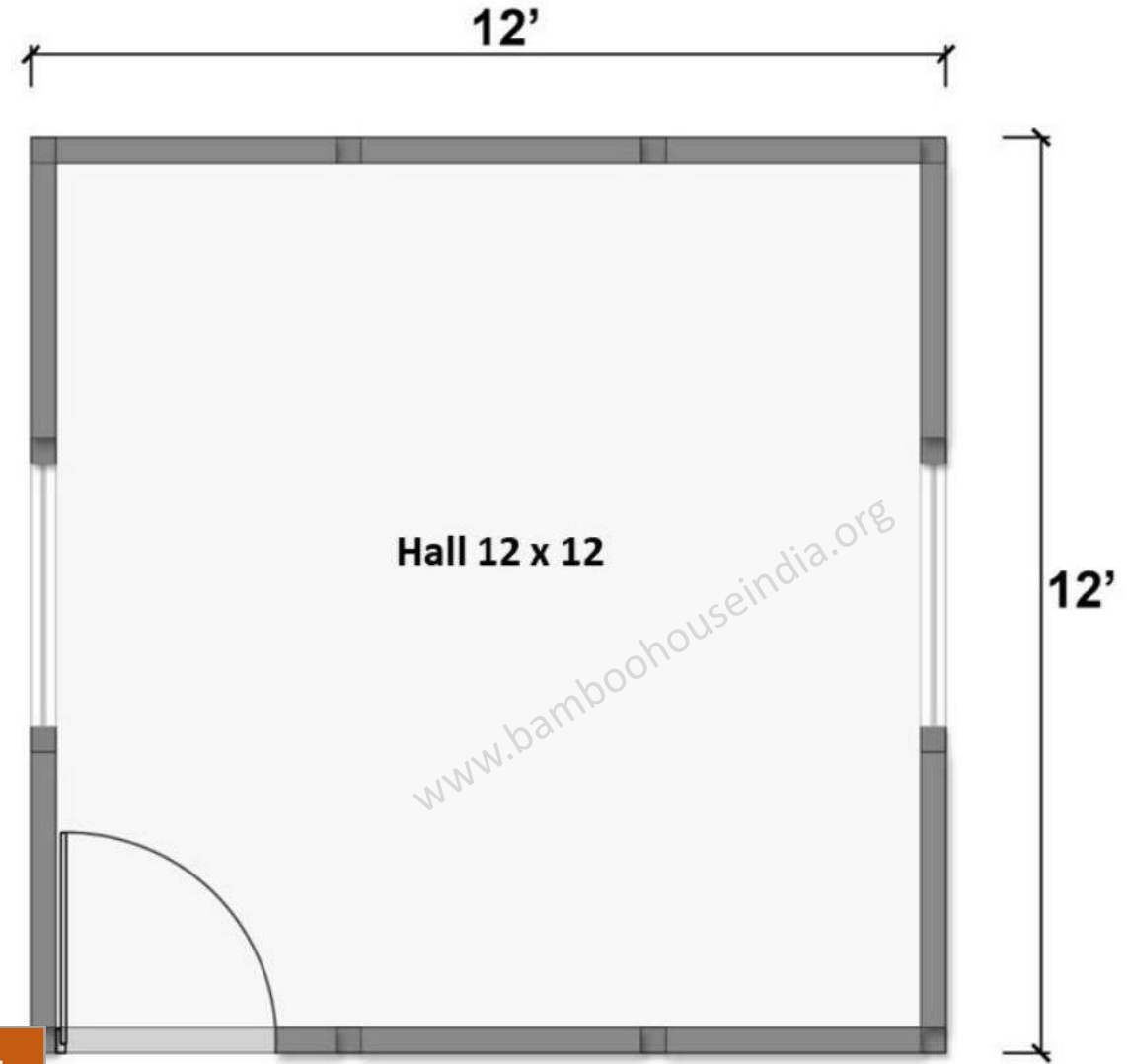


Rs.2,60,000/-

Cost mentioned is without
Civil, electrical, flooring &
Plumbing works.



Plan 6



Rs.2,05,000/-

Cost mentioned is without
Civil, electrical, flooring &
Plumbing works.

Plan 7



Rs.2,20,000/-

Cost mentioned is without
Civil, electrical, flooring &
Plumbing works.

Plan 8

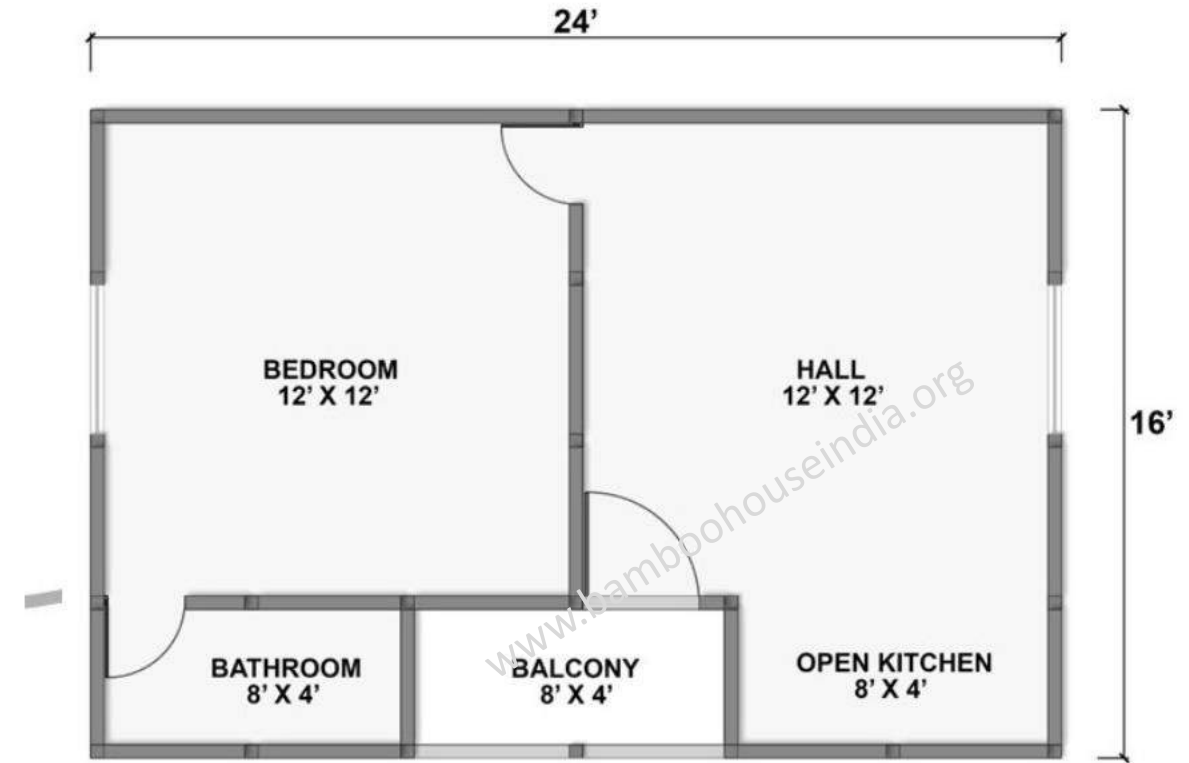


Rs.2,75,000/-

Cost mentioned is without Civil, electrical, flooring & Plumbing works.



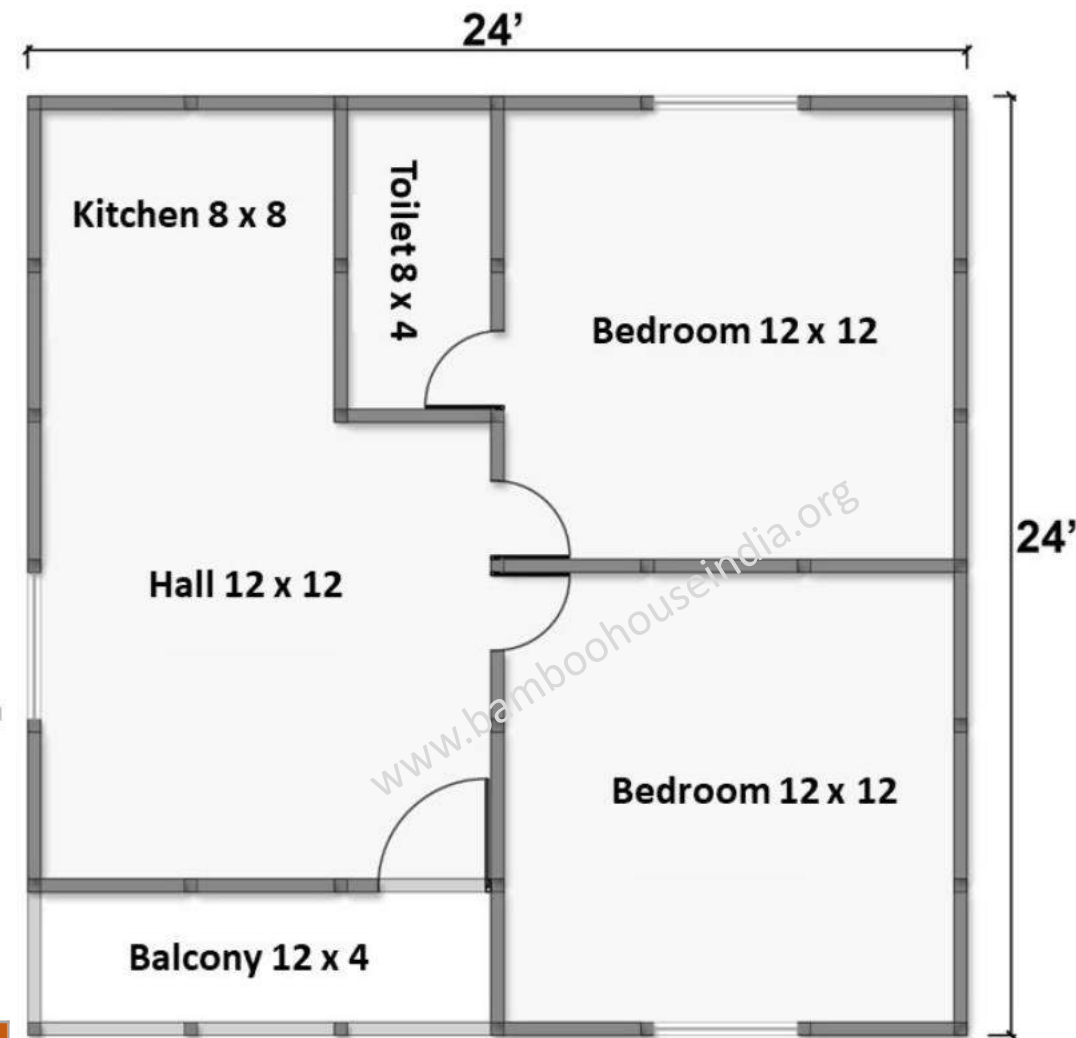
Plan 9



Rs.4,75,000/-

Cost mentioned is without
Civil, electrical, flooring &
Plumbing works.

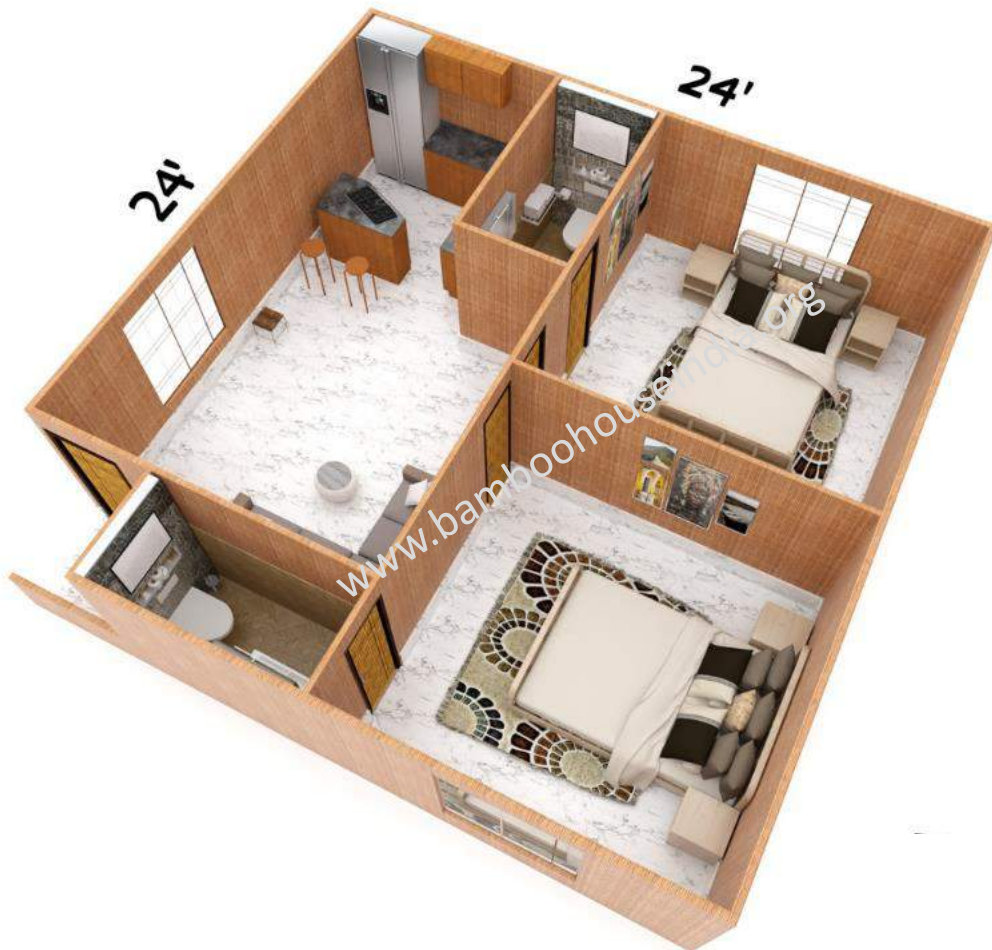
Plan 10



Rs.6,00,000/-

Cost mentioned is without Civil, electrical, flooring & Plumbing works.

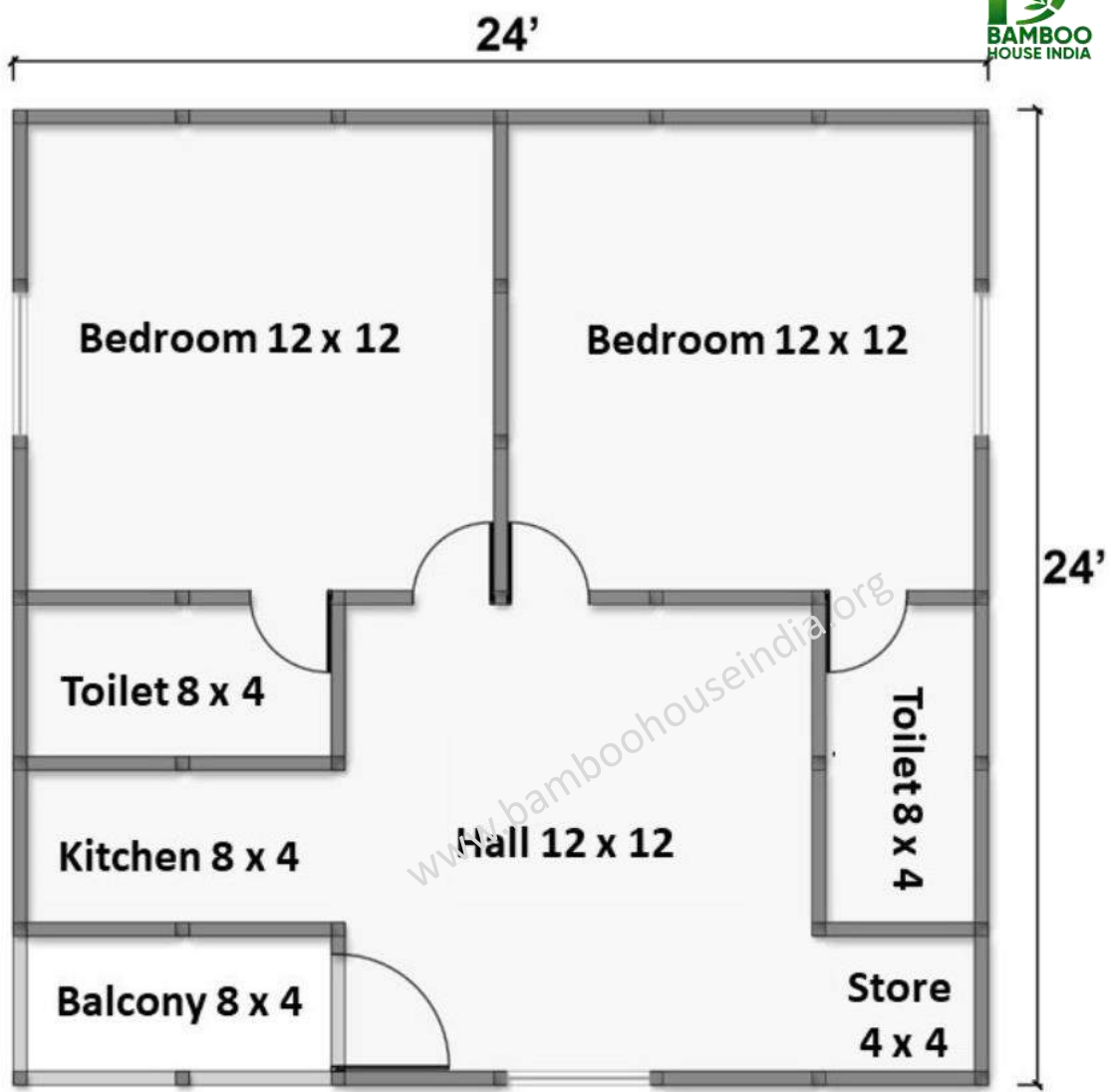
Plan 11



Rs.6,00,000/-

Cost mentioned is without
Civil, electrical, flooring &
Plumbing works.

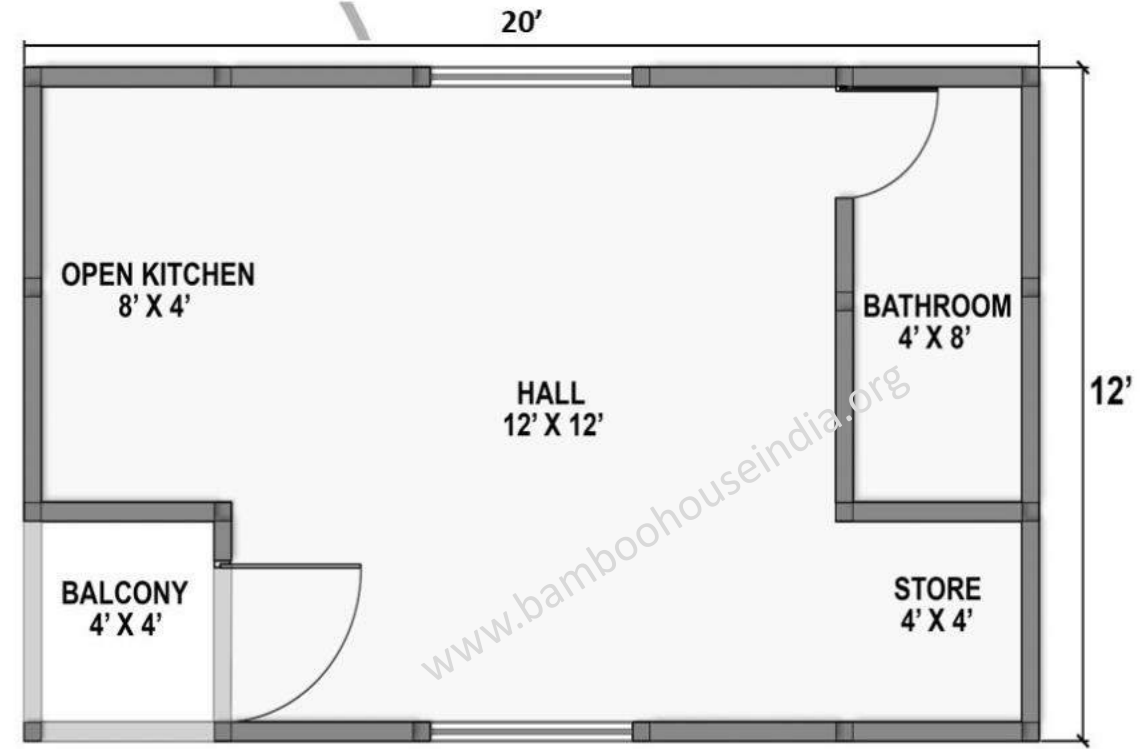
Plan 12



Rs.6,00,000/-

Cost mentioned is without Civil, electrical, flooring & Plumbing works.

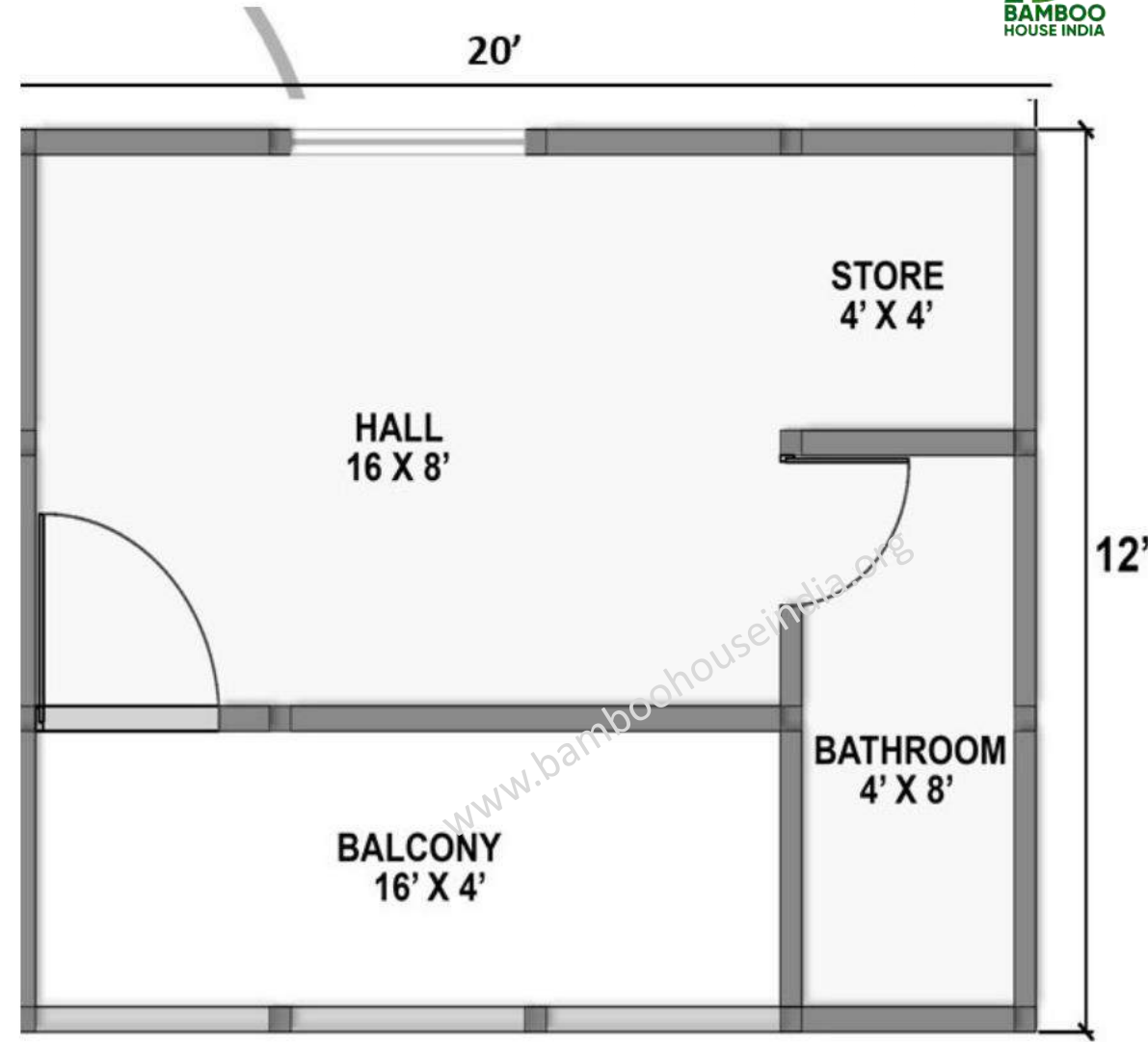
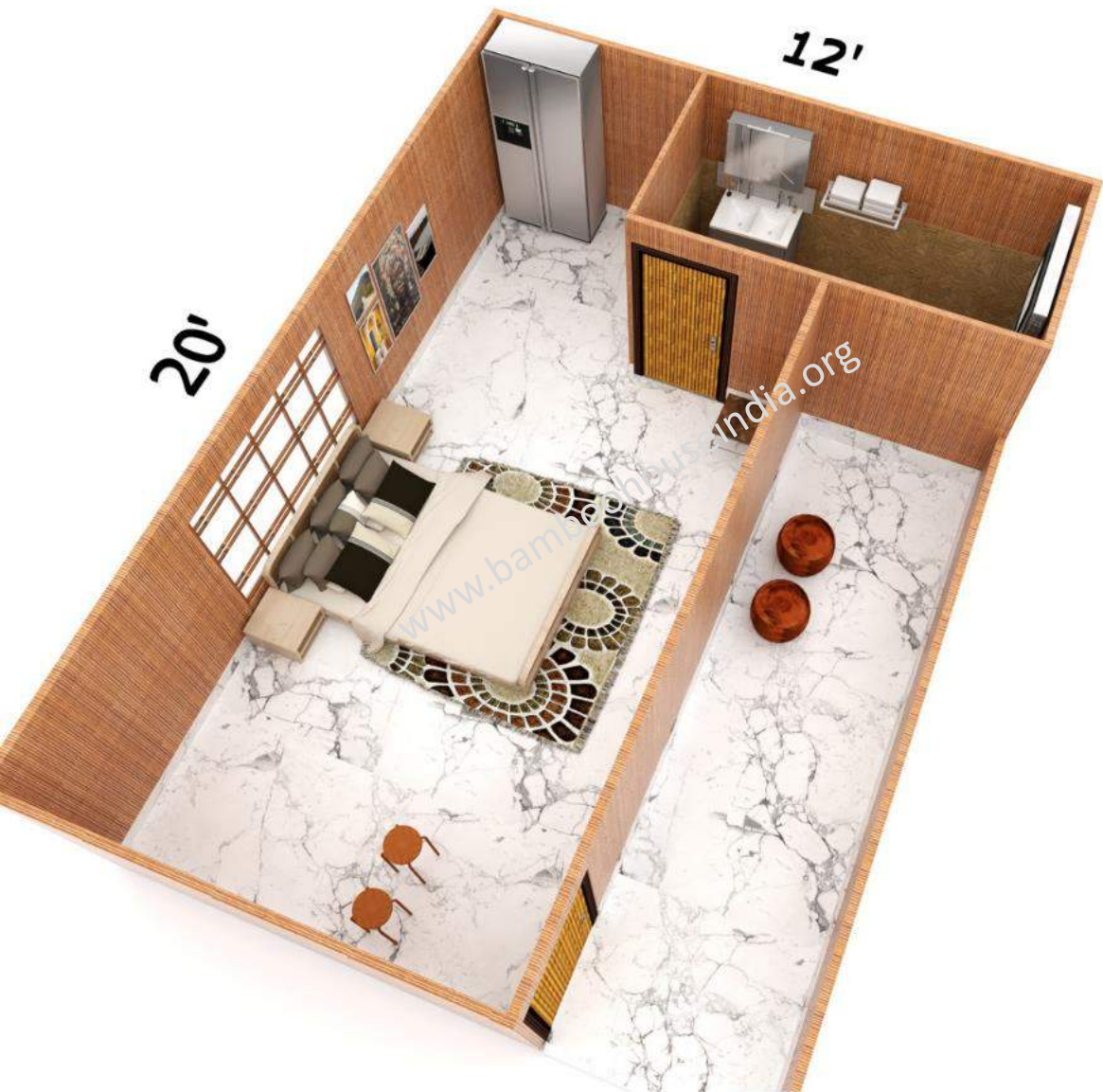
Plan 13



Rs.3,15,000/-

Cost mentioned is without Civil, electrical, flooring & Plumbing works.

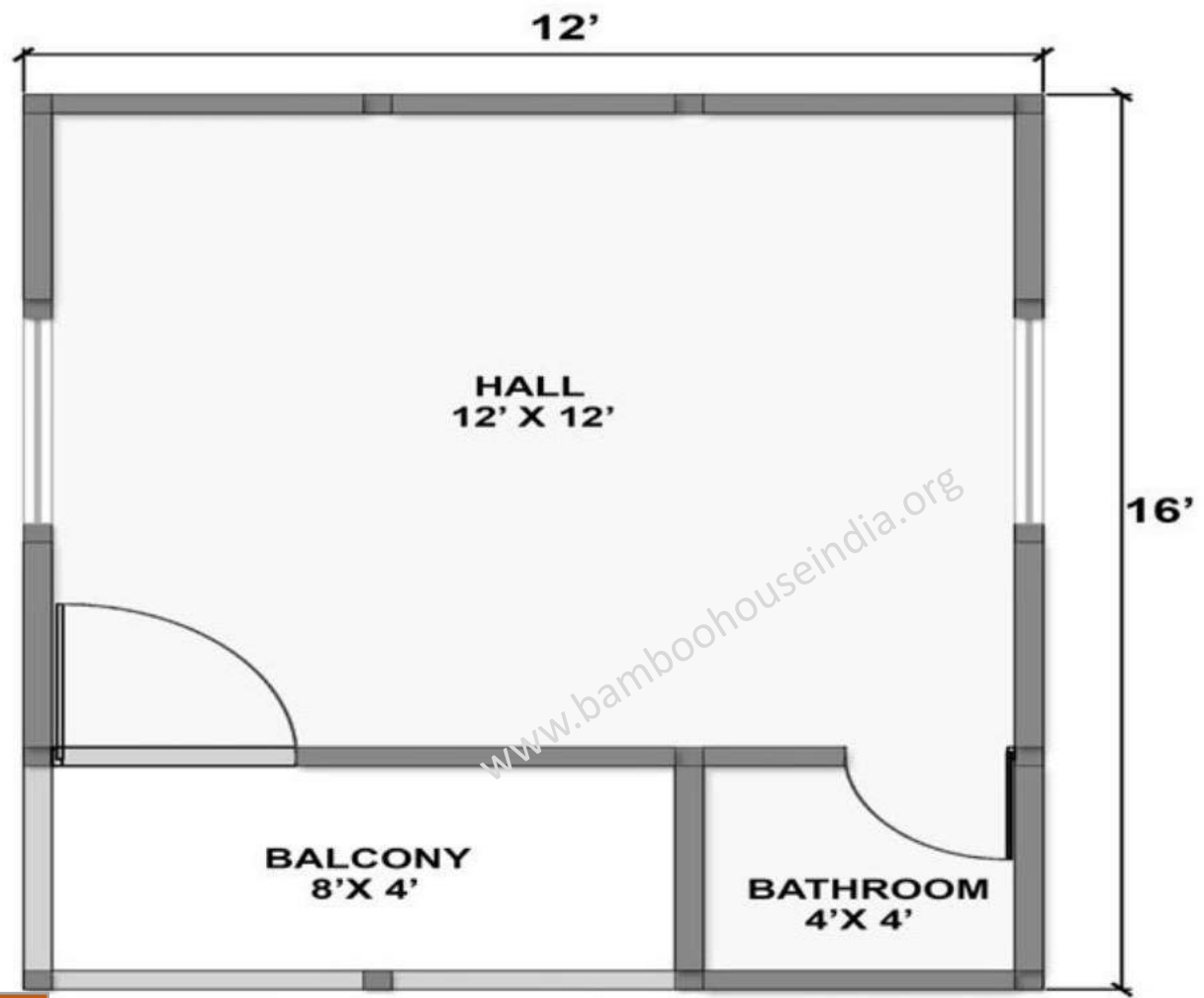
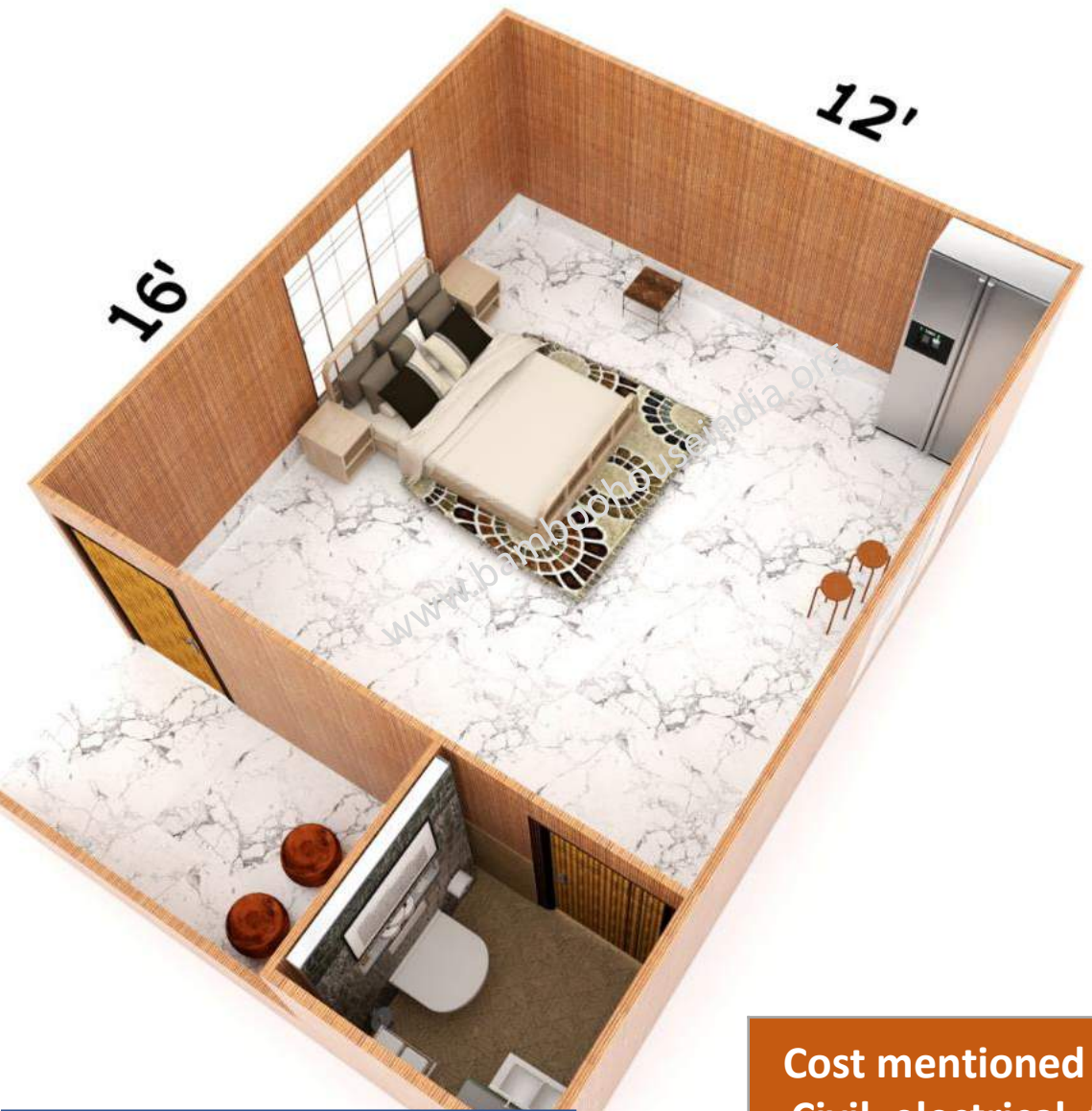
Plan 14



Rs.3,25,000/-

Cost mentioned is without Civil, electrical, flooring & Plumbing works.

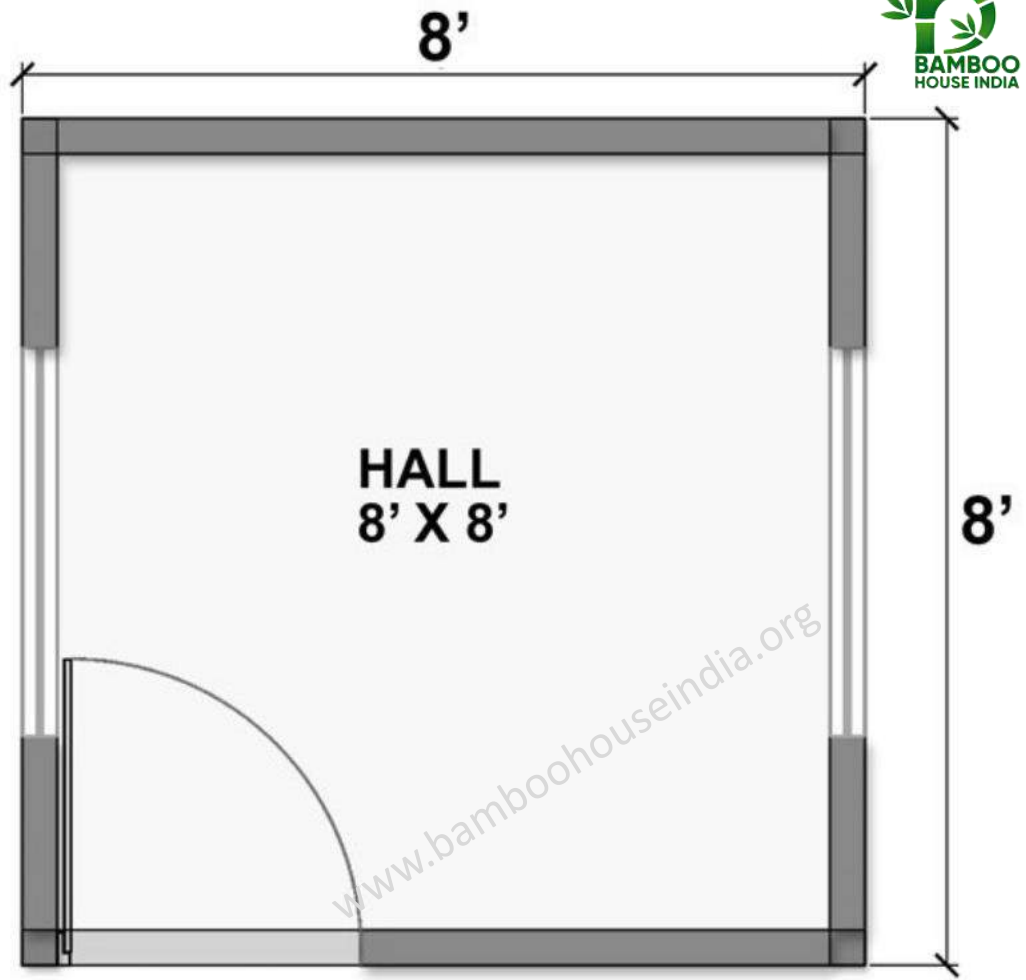
Plan 15



Rs.2,85,000/-

Cost mentioned is without Civil, electrical, flooring & Plumbing works.

Plan 16



Rs.1,25,000/-

Cost mentioned is without Civil, electrical, flooring & Plumbing works.

Plan 17



Rs.1,65,000/-

Cost mentioned is without Civil, electrical, flooring & Plumbing works.

Plan 18



Rs. 1,95,000/-

Cost mentioned is without Civil, electrical, flooring & Plumbing works.

A close-up photograph of a person's hands holding a thick stack of Indian 2000 rupee banknotes. The notes are pink and white, with the Reserve Bank of India logo and text visible. The background is softly blurred, showing what appears to be a window with light coming through. A white text box with a black border is overlaid on the center of the image, containing the following text:

**House costs mentioned are approx.
Final cost will be calculated at the time of construction as per
prevailing raw material prices**

TERMS AND CONDITIONS

"house cost mentioned is Ex Hyderabad and does not include costs for foundation, civil works, flooring, plumbing, and electrical works and has to be borne by the customer by arranging his/her local labor. We will guide your local labor but cannot arrange it."



"life of houses we make is over 20 years with Zero maintenance, all precautions are taken up front to ensure no future issues arise, and just like regular houses one can have fans, lights, AC, washroom, kitchen, geyser, water tank, etc,

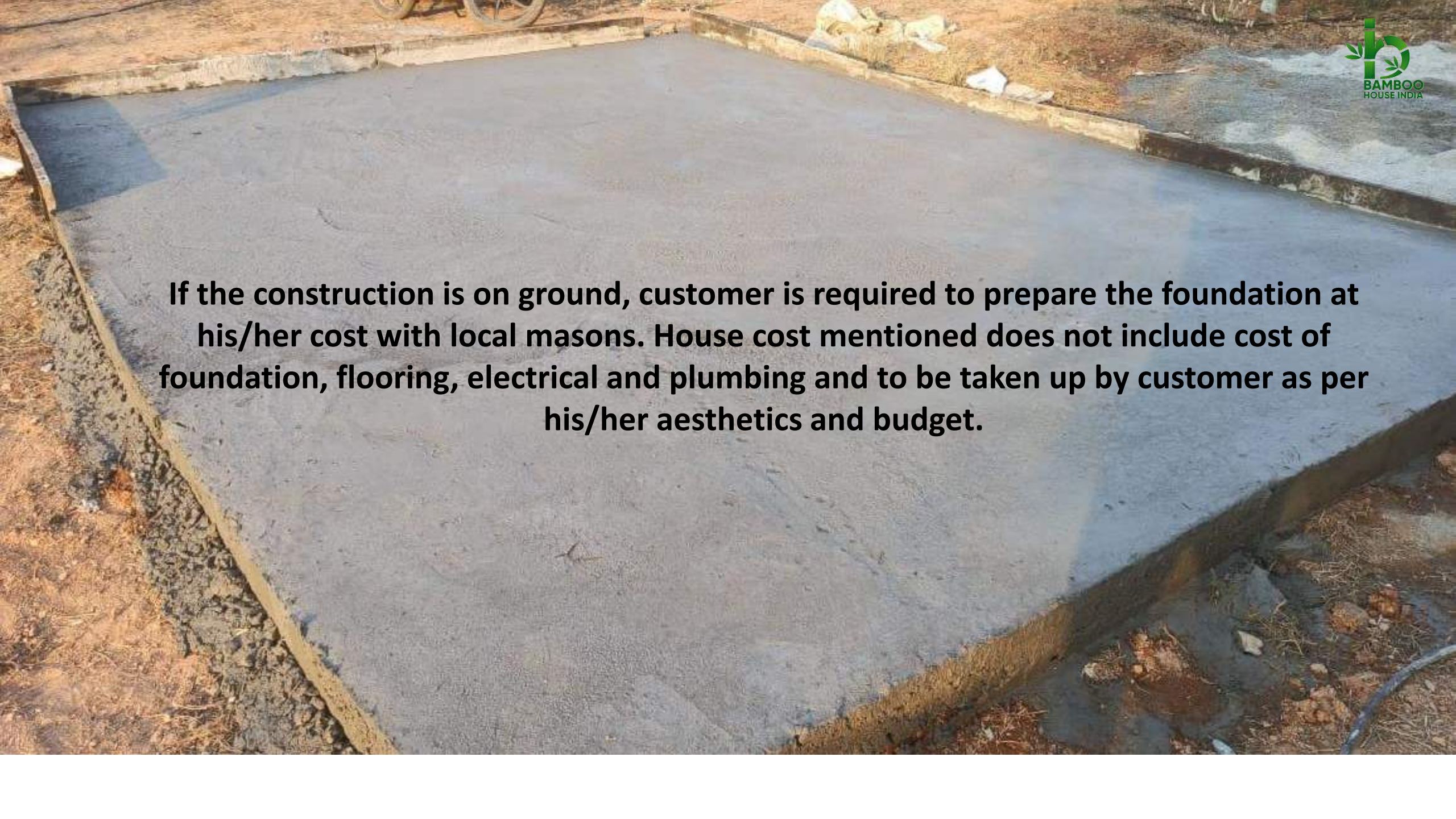
WORK SCOPE & COSTS BY CUSTOMER

- Foundation (if on Land)
- Flooring
- Electrical
- Plumbing
- Civil works.
- All above works customer to arrange with his/her local labor, we will guide.
- Food & Accommodation to our 3 member labor at site (out of Hyderabad)



WORK SCOPE & COSTS MENTIONED BY US

- Cost of Steel + Fabrication.
- Cost of Roof Material + Fixing
- Cost of Walling Material + Fixing
- Cost of False Ceiling + Fixing
- Cost of Doors + Fixing
- Cost of Windows + Fixing
- Finishing, closing & Handing over.
- Plus Associated labor cost involved in all the above works.

A large, rectangular concrete foundation slab is shown, freshly poured and still within its wooden formwork. The slab is a uniform grey color and is surrounded by a wooden border. The ground around the slab is dry and dusty, with some scattered debris and a bicycle wheel visible in the upper left corner.

If the construction is on ground, customer is required to prepare the foundation at his/her cost with local masons. House cost mentioned does not include cost of foundation, flooring, electrical and plumbing and to be taken up by customer as per his/her aesthetics and budget.

Metal Skeleton

www.bamboohouseindia.org



House Roofing

Color Coated Corrugated GI Roof Sheets

* Reference image only, actual roof sheet might differ



- Washroom in our prefab house construction

(fixtures and accessories by customer as per his/her budget and aesthetics)

Bamboo House on Terrace





Bamboo House on Farmland





BAMBOO
— HOUSE INDIA —

www.bamboohouseidia.org